

Included Materials:

- (1) Pre-wired CKF bracket
- (8) 3/8" Tek Screws
- (4) Quarter Turns
- (1) Internal Disconnect (WAGO)

Installation Instructions

- Disconnect power supply to the fixture
- Remove lamps, ballast (s), brackets from your existing fixture

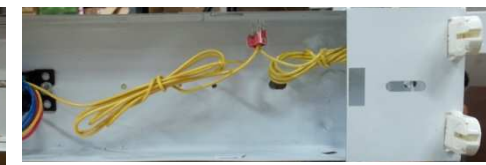
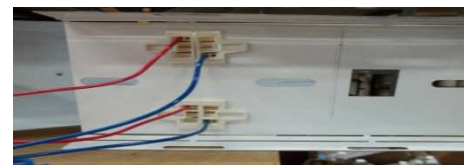
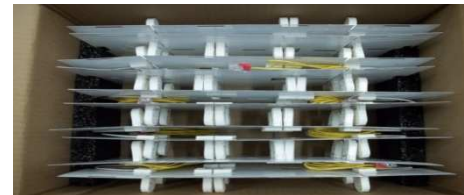
- Install the new ballast in the existing shell of the fixture
- Secure the ballast with existing screws
- Attach the ground wire closest to the power leads (black/white) from the new ballast and secure it with an existing screw

- Take 1 set of brackets out of the box
- Break apart your pre-wired brackets so you have 3 pieces

- Attach 1 yellow lead to one jumpered end bracket
- Repeat that step on the other jumpered end bracket (has 48" yellow with 2-port)
- Attach the 2 red wires from the ballast to the center 2 sockets horizontally.
- Repeat that step for the 2 blue wires (See Example)

- Place the flat, wired brackets over the channel of the existing fixture and fold tabs over and secure with the self tapping screws provided

CKF Bracket Only Kit Installation Instructions
1x8 - 4LT8



- To align the center bracket, take 1 lamp and install it to get the proper spacing.
- Fold tabs over channel and secure with 4 self tapping screws provided
- Repeat this step for the last end bracket
- Replace the ballast cover or install the new ballast cover or reflector (If applicable)
- Install lamps and restore power to the fixture

